

齿轮泵, 滑片泵, 自吸油泵, 离心泵, 水泵, 隔膜泵,
 直流泵, 油桶泵, 排污泵, 流量计, 加油枪。
 Gear Pump, Vane Pump, Self Priming Pump
 Centrifugal Pump, Diaphragm Pump, DC Pump,
 Barrel Pump, Sewage Pump, Water Pump,
 Flow Meter, Fuel Nozzles.



海湾泵业专注单相防爆设备创造!



温州海湾泵业有限公司
 WENZHOU HAIWAN PUMP CO.,LTD.

地址: 温州市永嘉县桥下镇梅岙中心大街
 Add: Meiao Street, Qiaoxia Town, Yongjia County
 Wenzhou City, Zhejiang, China, 325106
 Tel: +86-577-67498888 67953987 67953989
 Fax: +86-577-67498886
 Email: haiwan@haiwanpump.cn
 Http://www.haiwantech.com



HAIWAN PUMP

油泵系列 >>
 SERIES OIL PUMP
www.haiwantech.com

温州海湾泵业有限公司
 WENZHOU HAIWAN PUMP CO.,LTD.

公司简介 Brief introduction

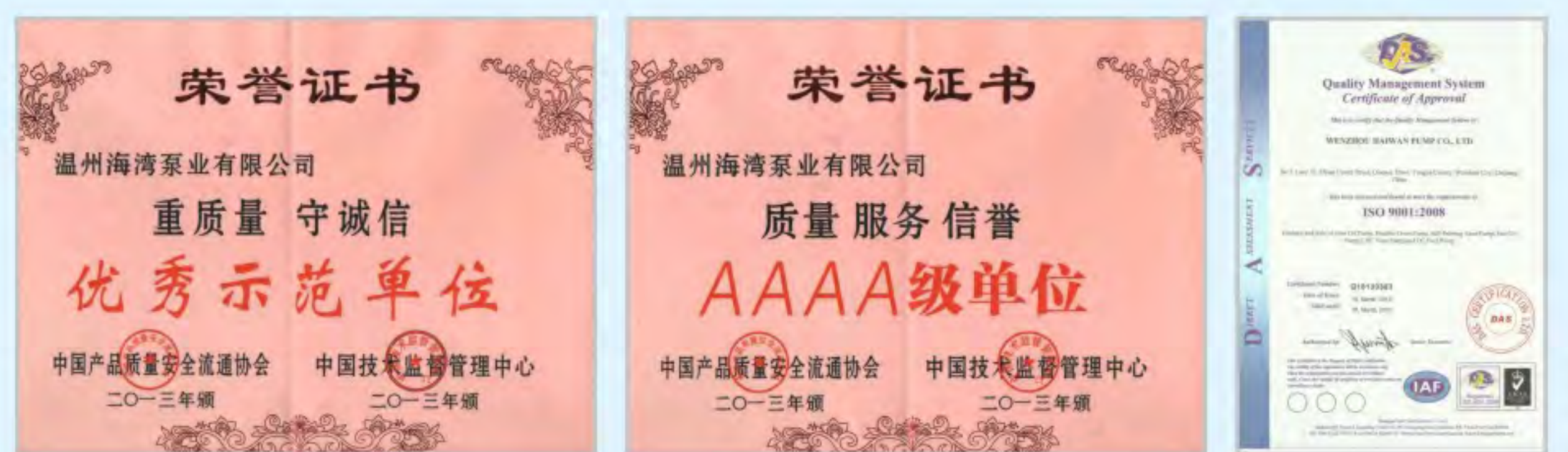
温州海湾泵业有限公司专业致力于各种石油设备、单相隔爆电机和直流隔爆电机生产，具有多年20多年生产经验。如单相防爆电机、单相防爆泵、尿素泵、甲醇泵、滑片泵、齿轮泵、自吸滑板泵、液化气泵、直流防爆泵、电动抽液泵、0.75KW~4KW单相隔爆电机、12VDC 24VDC直流隔爆电机等，特别是我司自主研发的防爆尿素泵（专利号201920511028.X）与国内大型加油机厂商，尿素加注机厂商产品配套。同时YBDC2单相防爆电机与ZWB3直流防爆电机获得了国际防爆检测中心的生产许可证和防爆合格证书，个别产品通过了ISO9001-2008质量体系认证,3C国家强制认证和欧盟CE认证。

本公司拥有齐全的检测设备和一批经验丰富的技术人员，依托先进技术，产品畅销俄罗斯、印度、澳大利亚、欧洲以及中东等国家地区。先进的工艺、精湛的技术、完善的检测、不断的创新给公司的高速发展提供了有力保障。本公司始终以优良的品质、完善的售后服务、本着顾客至上的原则，创造国际化、品牌化产品，希望与各界人士携手并进共创辉煌！

Wenzhou haiwan Pump Co., Ltd. specialized in the production of various petroleum equipment, single-phase explosion-proof motors and DC explosion-proof motors, with more than 20 years of production experience. Such as single-phase explosion-proof motor, single-phase explosion-proof pump, urea pump, methanol pump, sliding vane pump, gear pump, self-priming slide pump, liquefied gas pump, DC explosion-proof pump, electric barrel pump, 0.75KW~4KW single-phase explosion-proof motor, 12VDC & 24VDC explosion-proof motor, etc., especially the self-developed explosion-proof urea pump (patent number 201920511028.X) is matched with the products of domestic large fuel dispenser manufacturers and urea filling machine manufacturers. At the same time, YBDC2 single-phase explosion-proof motor and ZWB3 DC explosion-proof motor have obtained the production license and explosion-proof certificate of the international explosion-proof testing center. Some products have got certificate of conformity from ISO9001-2008 quality system certification, 3C national compulsory certification and EU CE certification.

The company has a full range of testing equipment and a group of experienced technical staff, relying on advanced technology, the products sell well in Russia, India, Australia, Europe and the Middle east. Advanced technology, superb technology, perfect testing and continuous innovation have provided a strong guarantee for the company's rapid development. The company always creates international and branded products with excellent quality, perfect after-sales service and the principle of customer first, wish to create a brilliant future by cooperating with people from all circles.

企业资质 Brief introduction



WCB 手提式齿轮油泵 Portable gear oil pump

WCB 手提式防爆油泵 Portable explosion proof oil pump



WCB75



WCB普通
regular type



WCB普通型
机油泵1450rpm
normal type
Oil pump

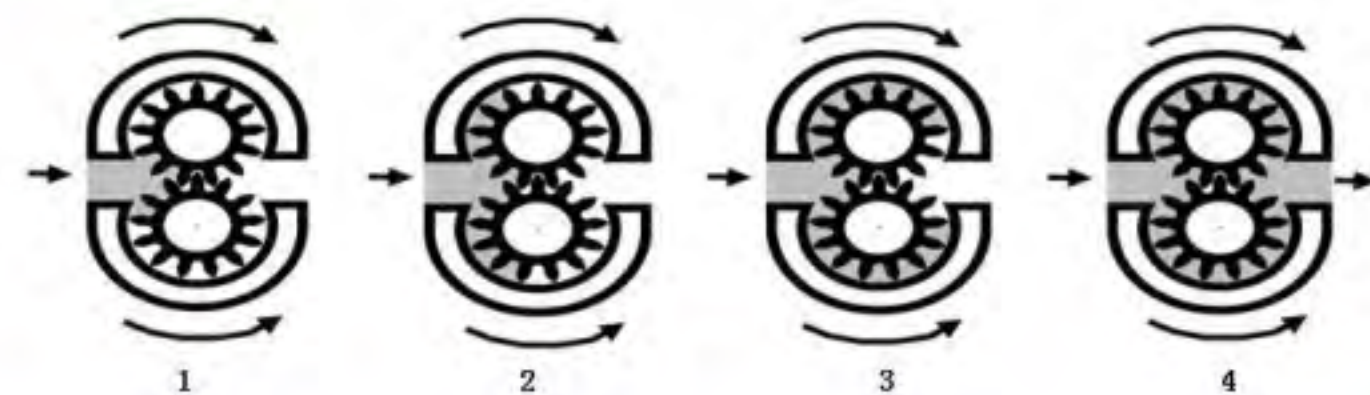
WCB型齿轮泵是一种便携式的小型油泵，可从一个容器输送到另外一个容器内，用于清洁的油性带润滑的液体的输送。配备铜齿，可输送低闪点液体，如汽油，苯等。带回流装置可直接用做加油设备。

WCB gear oil pump is a portable oil pump, it can transfer clean and viscosity liquid from one container to another. With brass gear, it can transfer low-flash point liquid such as gasoline, benzene etc. Bypass valve for option.

特点 Advantage

- 用于柴油，煤油，输送机油，液压油需选择四极电机
- 小巧轻便，经久耐用，方便维护，连续运转
- 铸铁泵体，抗腐蚀涂层
- 铸铝制电机，防护等级IP55
- 可选溢流阀，做加油设备
- 介质最高温度可达80℃
- 自吸最高可达5m
- 螺纹/法兰连接
- For diesel, Kerosene, if for engine oil, hydraulic oil must choose 4-pole motor
- Small size, durable, easy maintenance, continuous working.
- Cast-iron pump casing, treated against corrosion and paint-finished.
- Induction motor with aluminum casing. Grade protection: IP55
- Safety valve for option, for fuel dispensing
- Max liquid temperature up to 80℃
- Max suction could be 5 meter
- NPT/BSPF thread connect

原理 Theory



性能参数 Technical Specification

型号 Model	口径 Size(mm)	流量 Flow(L/min)	扬程 Head(m)	功率 Power(Kw)	电压 Voltage(V)	转速 Speed(rpm)	材质 Material
WCB-30	20	30	30	0.37	220/380	2800/1450	铸铁/不锈钢 Cast Iron/SS304
WCB-50	20	50	30	0.55	220/380	2800/1450	
WCB-75	25	75	30	0.75	220/380	2800/1450	
WCB-100	32	100	30	1.1	220/380	2800/1450	

WCB防爆油泵，是专为汽油等可燃性液体设计的油泵，采用了铸铝机壳，配备铜齿轮，氟橡胶油封，具有安全可靠，自吸能力强，结构紧凑，使用方便等。

WCB explosion proof oil pump designed for gasoline, and various flammable liquid transfer, with the construction of die-cast aluminum motor casing, brass gear, viton seal, with advantage of safety and durable, high suction capacity and convenient.

特点 Advantage

- 用于汽油，甲醇，酒精
- 220V 380V防爆电机
- 氟橡胶油封
- 铜齿轮
- 国家防爆检测认证
- For Gasoline, methanol, Alcohol
- 220V 380V explosion proof motor
- viton seal
- Brass gear
- National explosion proof certificate



220V 防爆
Ex-proof



380V 防爆
Ex-proof

WCB不锈钢 SS304

型号 Model	WCB-50S	WCB-75S	WCB-100S
进口 Inlet	3/4"	1"	1.2"
出口 Outlet	3/4"	1"	1.2"
最大流量 Max Flow	50L/min	75L/min	100L/min
电机 Motor	550W	750W	1100W
接口 Connect	NPT/BSPF thread		
电压 Power	AC220V/380V 50Hz		
转速 Speed	2800/1450 rpm		
泵体材料 Pump Material	SS304		
净重 Net Weight	14kg/pc	15kg/pc	20kg/pc
包装尺寸 Dimension	41 × 20.5 × 23cm 1pc/carton	46.5 × 21 × 24cm 1pc/carton	50 × 21 × 25cm 1pc/carton

- 用于食用油，植物油，化学溶液，热油
- 高硬度齿轮
- 防腐泵体
- 耐高温
- 氟橡胶

- For cooking oil, plant oil, chemical liquid, Hot oil
- high hardness gear
- corrosion protection pump body
- high temperature resistance
- Viton seal



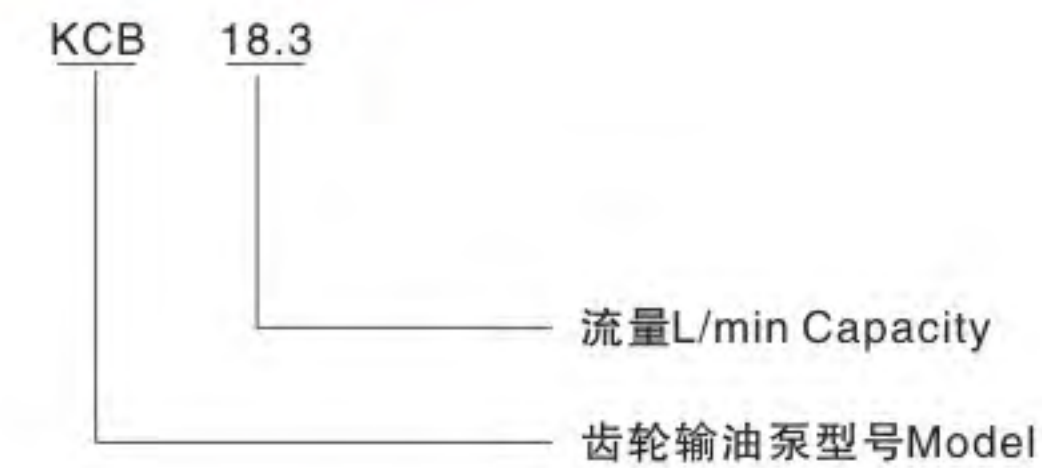
WCB 不锈钢
Stainless Steel

KCB 型齿轮油泵 Gear pump (large output)

KCB型齿轮油泵适用于输送各种不含固体颗粒，粘度为5-1500 C.s.t，温度在200℃以下的各种油类，如原油，柴油，煤油，润滑油，动植物油等。配用铜齿轮可输送低闪点液体，如汽油，苯等。

KCB Gear Oil Pump with large output, suitable for different oily liquid transfer which is without solid, with viscosity of 5-1500C.s.t, at temperature below 200℃, such as crude oil, diesel oil, lubricant oil, animal and vegetable oil etc. It's also available for transferring gasoline, brass and other low-flash point liquid when equipped with brass gear. Bypass valve is built in. SS304 for option.

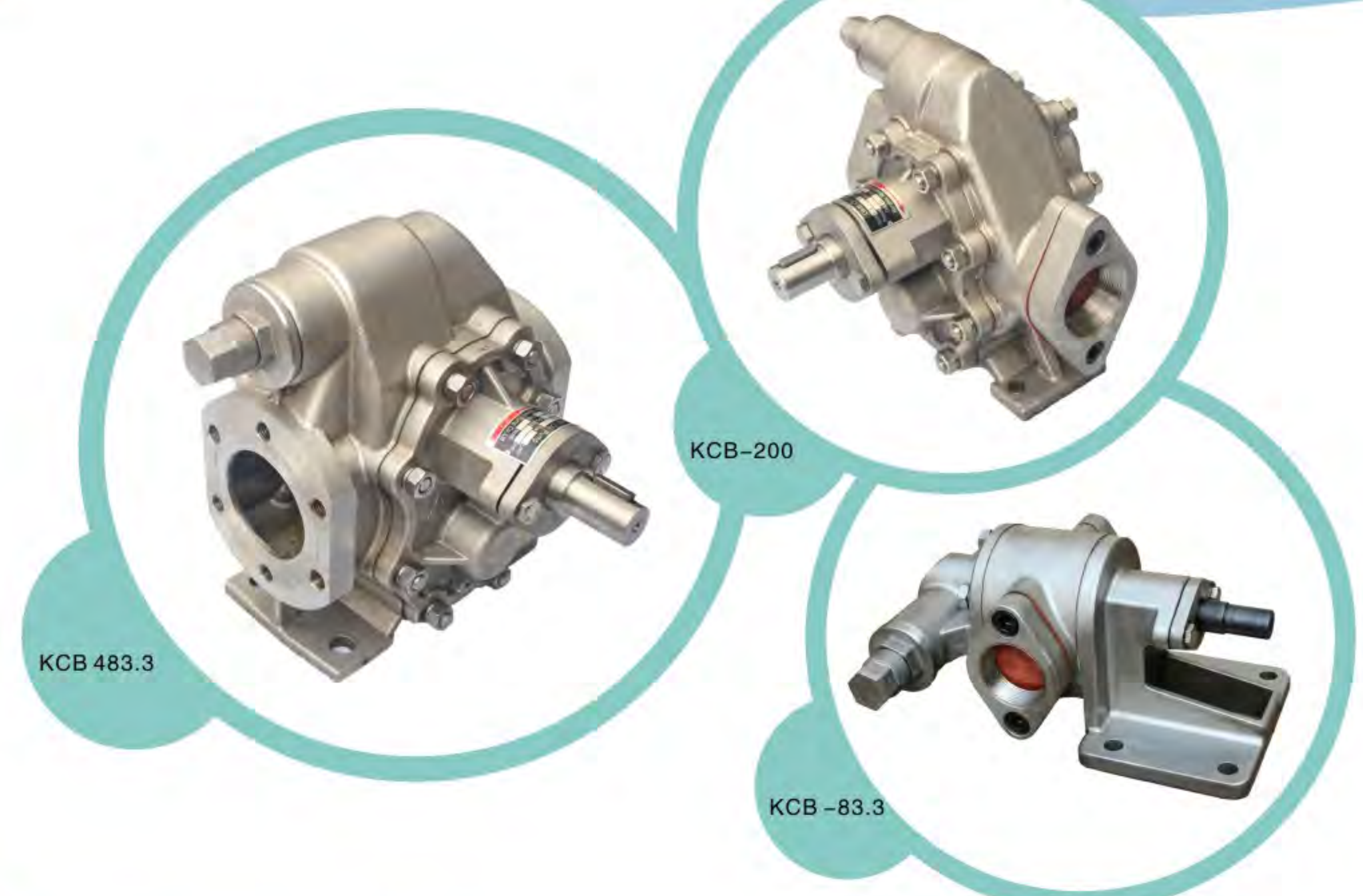
型号说明 Model Code



特征 Features

- 结构紧凑，使用，保养方便。
- 由齿轮，轴，泵体，安全阀，轴端密封组成。
- 输送高粘度液体，低压力，大流量。
- 具有良好的自吸性能，故泵工作前不需灌入液体。
- 动力驱动可选电机或者柴油机。
- 内置安全阀，超载时起安全保护作用。
- 在输油系统中可用做传输，增压泵，在燃油系统中可用做输送，加压，喷射的燃油泵。在一切工业领域中，均可做润滑油泵用。
- 广泛应用于石油，化工，管道输油，船舶，矿山，冶金，电站等行业。
- Smart and impact structure, convenient operation and maintenance.
- Consist of gear, shaft, pump body, bypass valve, seal.
- For high viscosity lubricant liquid transfer, low pressure, large output, up to 1200LPM.
- Good self-priming, so it is not necessary to pour lubricant before working.
- Electric motor or diesel engine driven.
- Bypass valve built in, to protect pump when pump works under high pressure.
- Performance as transfer pump or booster pump in oil delivery system, Applied as fuel pump, lubricating pump as well.
- Applicable in oil reservoirs, pipe transfer, ships, mining sites, factories and farms.

KCB 不锈钢齿轮油泵 Stainless steel gear oil pump



防爆齿轮油泵 Gear Oil Pump(Ex-Proof Motor)



性能参数 Technical Specification

型号 Model	口径 Size	流量 Flow (L/min)	压力 Pressure (Mpa)	吸程 Suction (m)	功率 Power (Kw)	转速 Speed (rpm)
KCB18.3	3/4"	18.3	1.45	5	1.5	1400
KCB33.3	3/4"	33.3	1.45	5	2.2	1420
KCB55	1"	55	0.33	5	1.5	1400
KCB83.3	1 1/2"	83.3	0.33	5	2.2	1420
KCB133.3	2"	133.3	0.33	5	3	1450
KCB200	2"	200	0.33	5	4	1450
KCB200	2"	200	0.6	5	5.5	1450
KCB200	2"	200	1.0	5	7.5	1450
KCB350	2"	350	0.6	5	7.5	1450
KCB300	3"	300	0.36	5	5.5	1450
KCB300	3"	300	0.6	5	7.5	1450
KCB483.3	3"	483.3	0.36	5	7.5	1450
KCB483.3	3"	483.3	1.0	5	11	1450
KCB650	3"	650	0.6	5	11	1450
KCB633	4"	633	0.28	5	11	1450
KCB960	4"	960	0.3	5	18.5	1450
KCB1200	4"	1200	0.3	5	22	1450



KYB 系列单相防爆自吸滑片泵 Single-phase explosion Proof self-priming slide pump



KYB 单相防爆 1.1KW
KYB single phase explosion-proof 1.1KW



KYB 单相防爆 3KW
KYB single phase explosion-proof 3KW



KYB 单相防爆 4KW
KYB single phase explosion-proof 4KW

- 用于柴油，煤油，汽油，苯等干净，轻质油品。
 - 滑片泵，输入功率小，大流量。
 - 铸铁泵体，四氟滑片，动力可选配防爆电机或柴油机。
 - 内置溢流阀。
 - 进出口用快速接头连接。
 - 最高传输液体温度可达100℃
 - 可长时间连续工作。
 - 超强自吸能力，工作前不必向泵内灌入油液。
 - 滑轮拖车设计，使用方便，易操作，易维护。
 - 输送二甲苯等溶剂需选择铜叶轮。
- For diesel oil, kerosene, gasoline, benzene and other clean, light oily liquid.
 - Vane pump, large output with small power input.
 - Cast iron pump casing, teflon vanes, electric motor or diesel engine driven for option.
 - Bypass valve built in.
 - Quick coupling connection on inlet/outlet side.
 - Max liquid temperature up to 100℃
 - Continuous working.
 - Strong self-priming, it's not necessary to pour oil before pump working.
 - Trailer type design, moveable, easy to use and maintenance.
 - The copper impeller should be selected for the transport of solvents such as xylene.

技术参数 Technical Specification

型号 Model	口径 Size(mm)	流量 Flow(m ³ /h)	扬程 Head(m)	吸程 Suction(m)	功率 Power(Kw)	转速 Speed(rpm)	电压 Voltage(V)
KYB25-9-30	25	9	30	7	1.1	1450	220
KYB40-15-30	40	20	30	7	1.5	1450	220
KYB40-20-30	40	20	30	7	2.2	1450	220
KYB50-25-25	50	25	25	7	3	1450	220
KYB65-35-20	65	35	20	7	4	1450	220

Optional copper impeller
可选择铜叶轮



KYB 系列三相防爆自吸滑片泵 Three-phase explosion-proof Self-priming slide pump



Two inch three-phase explosion-proof KYB50 两寸三相防爆



Three inch three-phase explosion-proof KYB80 三寸三相防爆



four-inch three-phase explosion-proof KYB100 四寸三相防爆

- 用于柴油，煤油，汽油，苯等干净，轻质油品。
 - 滑片泵，输入功率小，大流量。
 - 铸铁泵体，四氟滑片，动力可选配防爆电机或柴油机。
 - 内置溢流阀。
 - 进出口用快速接头连接。
 - 最高传输液体温度可达100℃
 - 可长时间连续工作。
 - 超强自吸能力，工作前不必向泵内灌入油液。
 - 滑轮拖车设计，使用方便，易操作，易维护。
 - 输送二甲苯等溶剂需选择铜叶轮。
- For diesel oil, kerosene, gasoline, benzene and other clean, light oily liquid.
 - Vane pump, large output with small power input.
 - Cast iron pump casing, teflon vanes, electric motor or diesel engine driven for option.
 - Bypass valve built in.
 - Quick coupling connection on inlet/outlet side.
 - Max liquid temperature up to 100℃
 - Continuous working.
 - Strong self-priming, it's not necessary to pour oil before pump working.
 - Trailer type design, moveable, easy to use and maintenance.
 - The copper impeller should be selected for the transport of solvents such as xylene.

技术参数 Technical Specification

型号 Model	口径 Size(mm)	流量 Flow(m ³ /h)	扬程 Head(m)	吸程 Suction(m)	功率 Power(Kw)	转速 Speed(rpm)	电压 Voltage(V)
KYB25-9-30	25	9	30	7	1.1	1450	380
KYB40-15-30	40	20	30	7	1.5	1450	380
KYB40-20-30	40	20	30	7	2.2	1450	380
KYB50-25-25	50	25	25	7	3	1450	380
KYB65-35-20	65	35	20	7	4	1450	380
KYB80-45-20	80	45	20	7	5.5	1450	380
KYB100-60-20	100	60	20	7	7.5	1450	380

Optional copper impeller
可选择铜叶轮

KYB系列防爆自吸滑片泵带计量

Explosion-proof self-priming
Slide pump with metering

KYB柴油机带计量

Diesel engine with flow meter



KYB一寸 OGM流量计 1.1KW单相 防爆电机



KYB两寸 OGM流量计 3KW单相 防爆电机



KYB四寸 LC流量计 7.5KW三相 防爆电机

- 用于柴油，煤油，汽油，苯等干净，轻质油品。
- 滑片泵，输入功率小，大流量。
- 铸铁泵体，四氟滑片，动力可选配防爆电机或柴油机。
- 内置溢流阀。
- 进出口用快速接头连接。
- 最高传输液体温度可达100℃
- 可长时间连续工作。
- 超强自吸能力，工作前不必向泵内灌入油液。
- 滑轮拖车设计，使用方便，易操作，易维护。
- 输送二甲苯等溶剂需选择铜叶轮。
- 可选择LC流量计或OGM流量计。
- For diesel oil, kerosene, gasoline, benzene and other clean, light oily liquid.
- Vane pump, large output with small power input.
- Cast iron pump casing, teflon vanes, electric motor or diesel engine driven for option.
- Bypass valve built.
- Quick coupling connection on inlet/outlet side.
- Max liquid temperature up to 100℃
- Continuous working.
- Strong self-priming, it's not necessary to pour oil before pump working.
- Trailer type design, moveable, easy to use and maintenance.
- The copper impeller should be selected for the transport of solvents such as xylene.
- Optional LC flow meter or OGM flow meter.

型号 Model	DKYB-40	DKYB-50	DKYB-65	DKYB-80
进出口 Dia(mm)	40/40	50/50	65/65	80/80
最大流量 Max Flow	20m ³ /H	25m ³ /H	32m ³ /H	35m ³ /H
柴油机 Diesel Engine	178FS/3.7kw		186FS/5.7kw	
转速 Speed	10000 rpm		8000 rpm	
泵体材料 Pump Material	铸铁 Casting Iron			
流量计 Flow Meter	OGM and LC flow meter for option			

Optional copper impeller/LC flowmeter/OGM flowmeter
可选铜叶轮/LC流量计/OGM流量计



柴油机驱动移动式自吸滑板泵
Diesel Engine Driven

DKYB

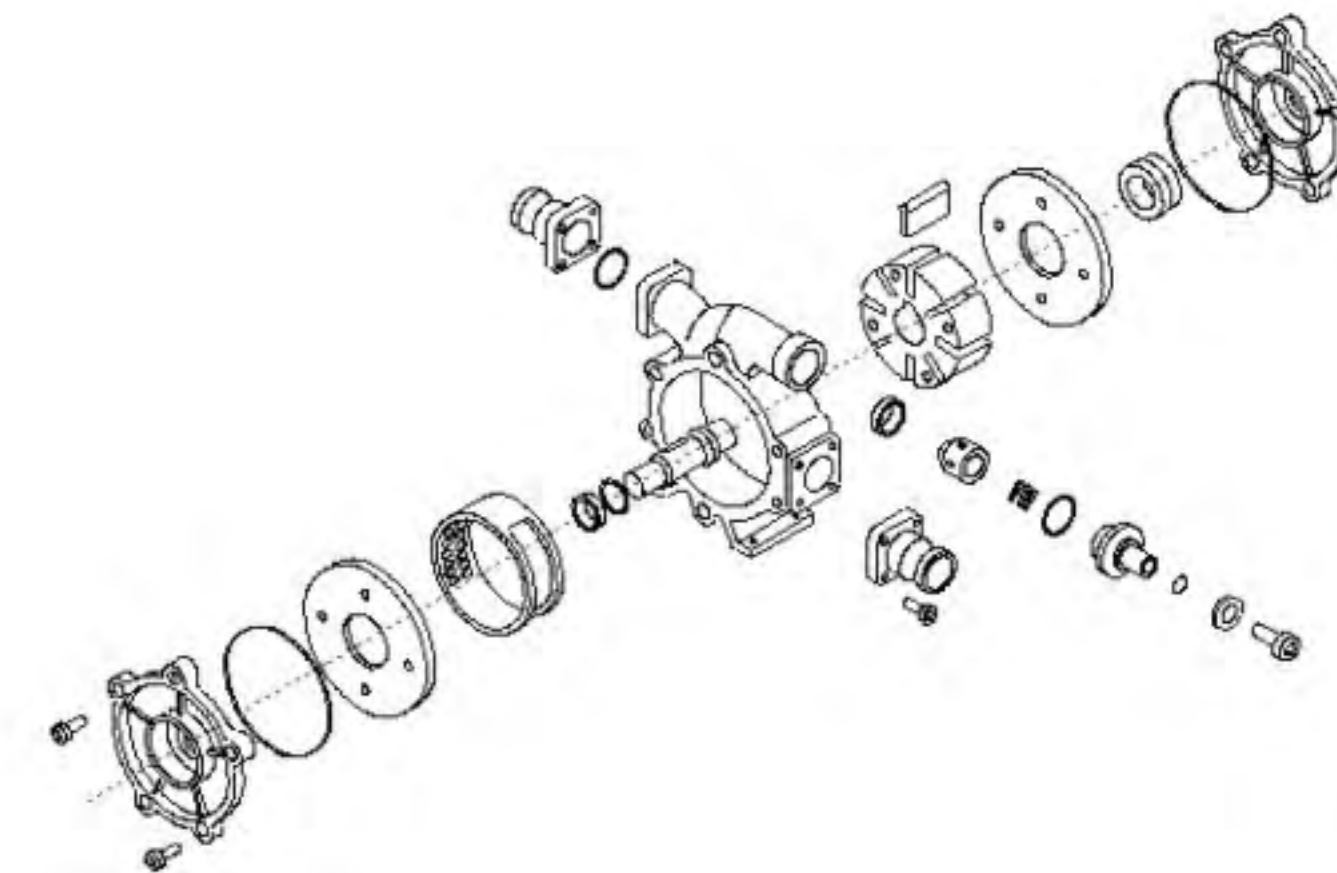
- 适用于柴油，汽油，煤油，机油等
- 携带方便，便于移动
- 柴油机驱动，适用于野外工作。
- 快速接头进出口
- 快速计量，小型移动加油站
- For Diesel ,Gasoline,Kerosene,engine oil and etc
- It' s easy to move with wheels .
- Diesel engine driven,apply for wild circumstances.
- Quick coupling,easy connect.
- With Flow meter ,used for a Mobile fuel unit.



柴油机带计量
diesel engine
with flow meter

KYB-50

原理 Theory



计量式移动自吸滑板泵
pump with flow meter

DKYB

技术参数 Technical Specification

型号 Model	口径 Size(mm)	流量 Flow(m ³ /h)	扬程 Head(m)	吸程 Suction(m)	功率 Power(Kw)	转速 Speed(rpm)	电压 Voltage(V)
KYB25-9-30	25	9	30	7	1.1	1450	380/220
KYB40-15-30	40	20	30	7	1.5	1450	380/220
KYB40-20-30	40	20	30	7	2.2	1450	380/220
KYB50-25-25	50	25	25	7	3	1450	380/220
KYB65-35-20	65	35	20	7	4	1450	380
KYB80-45-20	80	45	20	7	5.5	1450	380
KYB100-60-20	100	60	20	7	7.5	1450	380

Optional copper impeller/LC flowmeter/OGM flowmeter
可选铜叶轮/LC流量计/OGM流量计

DYB 系列交流防爆电动油泵 AC Electric transfer pump Explosion proof



- 用于柴油，汽油，煤油，溶剂油，庚烷，甲醇。
- 输送汽油，甲醇，二甲苯必须选用铜叶轮。
- 防爆永磁电动机。
- 内置溢流阀。
- 1"4米油管，1"自动油枪。
- 防水，防雨。
- 油枪架保护防尘防脏。
- 220V单相防爆电机。
- 连接方便，易于携带。
- For diesel, gasoline, kerosene, mineral spirits, Stoddard solvent, heptane, methyl alcohol.
- It's available for transferring gasoline, xylol and methanol when equipped with copper impeller.
- Explosion-proof permanent magnet motor.
- Bypass valve built in.
- 1" diameter, 4' hose and 1" automatic nozzle.
- Nozzle boot that protects against dirt and contamination.
- 2" threaded base for tank openings.
- 220V Single phase Ex-proof motor.
- Easy to connect, portable.

可选配件 Options

- FM-120流量计
- 自封油枪
- 4m 油管
- FM-120 meter in liters
- Automatic nozzle
- 4m Hoses



型号 Model	DYB80-EX	DYB80-EX	DYB150-EX
泵的流量 Flow of the pump	(40-80) L/min	(40-80) L/min	(120-150) L/min
电压 voltage	AC220V ± 10% 50Hz AC1100 ± 10% 50Hz	AC220V ± 10% 50Hz AC1100 ± 10% 50Hz	AC220V ± 10% 50Hz AC1100 ± 10% 50Hz
溢流阀 overflow valve	Yes	Yes	Yes
过滤网 filter	Yes	Yes	Yes
电机参数 motor parameters	功率0.55kw 转速2800r/min	功率0.75kw 转速2800r/min	功率1.1kw 转速2900r/min
进出口 inlet/outlet	1"NPT 1"NPT	1"NPT 1"NPT	1.2"NPT 1.2"NPT
材质 material	铸铁/不锈钢 Cast iron/Stainless steel	铸铁/不锈钢 Cast iron/Stainless steel	铸铁 Cast iron
防爆标志/等级 Explosion-proof marks/grades	ExdIIBT4Gb/F	ExdIIBT4Gb/F	ExdIIBT4Gb/F
吸程/扬程 Suction/Head	5m/15m	5m/15m	5m/15m
可选配置 For Option	4m油管, 油表, 油枪, 铜叶轮 4m Hose, Fuel Meter, Fuel Nozzle, Copper impeller		

HWG 系列防爆滑片机油泵 Series explosion-proof Sliding vane oil pump

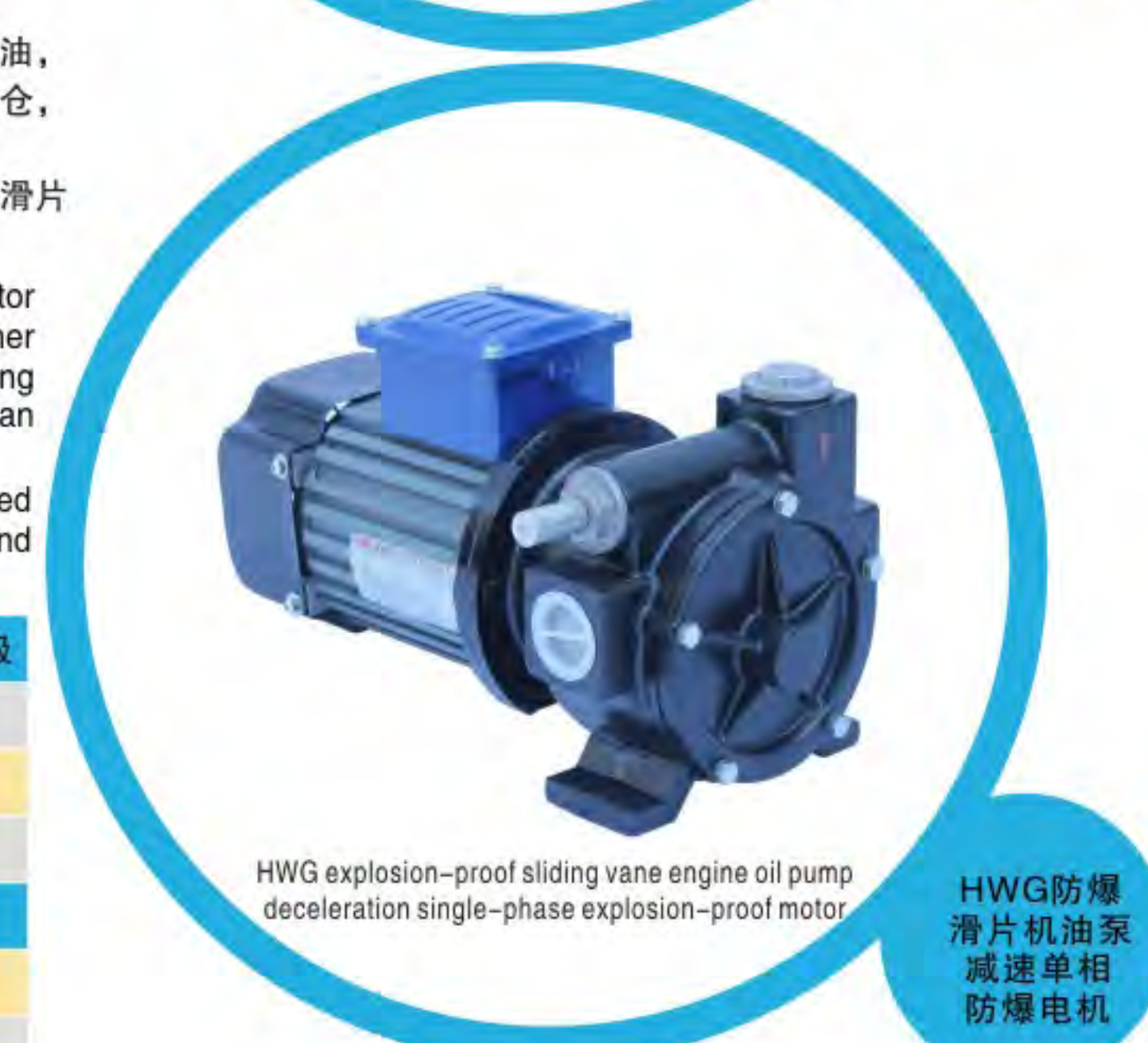
- 适用于柴油，汽油，煤油，溶剂油和庚烷
- 输送汽油，甲醇，二甲苯必须选用铜叶轮。
- 防爆无刷电动机，带过热保护
- 内置溢流阀。
- 油罐口1"接口螺纹
- 可以60分钟连续运转
- 可正反转不影响泵整体性能
- Suitable for diesel, gasoline, kerosene, mineral spirits, heptane, and hexane
- It's available for transferring gasoline, xylol and methanol with copper impeller
- Explosion proof brushless motor with thermal overload protection, for utmost safety.
- Bypass valve built in.
- 2" threaded base for tank openings.
- 60min duty cycle, not for continuous operation.
- Can be reversed without affecting the overall performance of the pump

型号 Model	ZWB3-70EX
进口 Inlet Dia	1"
出口 Outlet Dia	1"
最大流量 Max Flow	70L/min
防爆电机 Ex-motor	300W(12V) 500W(24V)
电压 Power Supply	DC12V or DC24V
可选配置 For Option	进/出油管, 油表, 油枪, 铜叶轮 Suction/Discharge hose, Flow Meter, Fuel Nozzle, Copper impeller

HWG防爆滑片机油泵 Explosion-proof sliding vane oil pump

该泵采用双向齿轮与电机轴之间配合传动，用于输送汽油，柴油、煤油，机油，液压油等轻重油品。该泵不仅可用于油库中卸油，抽底油，扫仓，加油，还可以用于机动加油车、油罐车。
泵自带溢流阀，以带叶片的转子驱动液体传输。泵体材质采用铸铁、滑片材质采用RPP，经久耐用。输入功率小 流量大 高扬程。
The pump adopts a transmission between the two-way gear and the motor Shaft for conveying gasoline, diesel and kerosene, oil, hydraulic oil and other Light and heavy oil products. The pump can be used not only for oil unloading In oil depots, bottom oil, but also for sweeping warehouses.refueling, can Also be used in motorized refueling vehicles, tank trucks.
The pump comes with a relief valve that drives the liquid transfer with a bladed Rotor. The pump body is made of cast iron and slide.the material is rpp and Durable. Small input power, large flow, high lift.

型号 Model	HWG25-4-20减速	HWG25-5-20 6极
口径 Size	25mm	25mm
流量 Flow	55-70L/min	70-85L/min
扬程 Head	20m	20m
功率 Power	750W	550W-6极
转速 Speed	1450rpm	900rpm
电压 Voltage	220V, 50Hz	
叶轮可选配置 Impeller optional configuration	铜叶轮/球墨叶轮 Copper impeller / spheroidal impeller	



HWX 系列防爆油水高压泵 Explosion-proof oil water High pressure pump

HWX油水两用泵由铝合金泵壳和流道式铜叶轮组合。该系列流量大、扬程高、自吸速度快、能耗成本低等优势。可输送汽油酒精甲醇、煤油柴油等易燃易爆介质适用于工矿企业、加油站、油库、矿井等场地循环排液，也可作为防爆消防泵，市政工程循环排水。

The HWX oil-water dual-purpose pump is a combination of an aluminum alloy pump casing and a runner copper impeller. The series has the advantages of large flow, high head, fast self-priming speed and low energy consumption. It can transport gasoline, alcohol, methanol, kerosene, diesel and other inflammable and explosive media suitable for circulating liquids in industrial and mining enterprises, gas stations, oil depots, mines, etc. It can also be used as an explosion-proof fire pump and municipal engineering circulating drainage.



HWX 四寸
单相防爆泵 HWX four inch single phase
explosion-proof pump



HWX 3KW
三相防爆泵 HWX 3KW three-phase
explosion-proof pump



HWX 3KW
单相防爆泵 HWX 3KW single phase
explosion-proof pump

技术参数 Performance Specification

型号 Model	HWX25-8-15	HWX40-18-28	HWX50-25-28	HWX80-50-28	HWX100-75-20
口径 Size	25mm	40mm	50mm	80mm	100mm
流量 Flow(m ³ /h)	8	18	25	50	75
扬程 Head	15	28	28	28	20
功率 Power	1.1KW	1.5KW	2.2KW	2.5KW	3KW
转速 Speed	2800rpm	2800rpm	2800rpm	2800rpm	2800rpm
电压 Voltage	220/380	220/380	220/380	220/380	220/380

叶轮可选配置 Impeller optional configuration

球墨叶轮/铜叶轮 Spherical impeller / copper impeller

HWB 系列防爆油水循环泵 Explosion-proof oil water Circulation pump

HWB油水循环泵采用离心式结构。具有较大流量，无噪音等优点。能排放浑浊液体和固体小颗粒能力，适用于矿井加油站工矿企业等场地的供水及锅炉循环供水输送汽油酒精甲醇等易燃易爆物质。

The HWB oil-water circulation pump uses a centrifugal structure. It has the advantages of large flow, no noise, etc. It can discharge turbid liquid and small solid particles. It is suitable for liquid supply in mine gas station industrial and mining enterprises and boiler circulating water supply to transport flammable and explosive substances such as gasoline, alcohol and methanol.



HWB
四寸三相防爆 HWB four-inch three-phase
explosion-proof



HWB
四寸单相防爆 HWB four-inch single-phase
explosion-proof



HWB
3KW单相防爆 HWB3KW single phase
explosion-proof

技术参数 Performance Specification

型号 Model	HWB25-7-15	HWB40-12-17	HWB50-30-23	HWB80-60-19	HWB100-72-19
口径 Size	25mm	40mm	50mm	80mm	100mm
流量 Flow(m ³ /h)	7	12	30	60	72
扬程 Head	15	17	23	19	19
功率 Power	0.75KW	1.1KW	1.5KW	2.2KW	3KW
转速 Speed	2800rpm	2800rpm	2800rpm	2800rpm	2800rpm
电压 Voltage	220/380	220/380	220/380	220/380	220/380

叶轮配置 Impeller configuration

铜叶轮 copper impeller

HW 系列防爆不锈钢自吸泵 Explosion-proof stainless Steel self-priming pump



HW stainless steel
Three-phase explosion-proof pump
专利号: 201920567242.7
Patent No.201920567242.7

HW不锈钢
三相防爆泵



HW stainless steel
Single phase explosion-proof pump
专利号: 201920567242.7
Patent No.201920567242.7

HW不锈钢
单相防爆泵

HW系列泵是我公司自行研制的不锈钢自吸防爆泵, 泵的叶轮采用半开式结构形式, 由于产品集优良结构、性能、造型于一身, 兼过流零件及连接架采用优质不锈钢材料制造, 所以具有耐腐蚀性能可靠, 使用维护方便、结构紧凑、能耗低、密封性能好等一系列优点。管路不需安装底阀, 工作前只需保证泵体内储有定量引液即可。

主要用途

该系列泵可输送温度不高于150℃, 低于-40℃。含有细小软颗粒或纤维质, 带腐蚀性或有卫生要求的液体, 广泛适用于食品、饮料、医药、污水处理、化工、电镀、漂染、精细化工等行业使用。可输送尿素、甲醇、二甲苯、汽油、柴油等易燃易爆介质。

使用条件

1. 以叶轮中心为准, 潜入液体深度不得超过10m。
2. 输送介质温度不高于150℃, 低于-40℃
3. 输送介质的PH值304 (4-10)

HW series pump is a stainless steel self-priming explosion-proof pump developed by our company. The impeller of the pump adopts a semi-open structure. Due to the excellent structure, performance and shape of the product, the over-current parts and connecting frame are made of high-quality stainless steel. Therefore, it has a lots of advantages such as reliable corrosion resistance, convenient use and maintenance, compact structure, low energy consumption and good sealing performance. The pipeline does not need to be installed with a bottom valve. It is only necessary to ensure that the pump body has a quantitative liquid before storage.

The main purpose

This series of pumps can resist temperatures up to 150 °C and below -40 °C. Contains fine soft particles or fiber, corrosive or hygienic liquid, widely used in food, beverage, pharmaceutical, sewage treatment, chemical, electroplating, bleaching, fine chemicals and other industries. It can transport flammable and explosive media such as urea, methanol, xylene, gasoline and diesel.

Conditions of Use

1. Based on the center of the impeller, the depth of the submerged liquid shall not exceed 10m.
2. The temperature of the conveying medium is not higher than 150 °C, lower than -40 °C
3. The pH of the transport medium is 304 (4-10).

技术参数 Performance Specification

型号 Model	HW25-3-10	HW25-3-18	HW25-6-18	HW40-8-18	HW40-13-20	HW50-13-22
口径 Size	25mm	25mm	25mm	40mm	40mm	50mm
流量 Flow(m³/h)	3	3	6	8	13	13
扬程 Head	10	18	18	18	20	22
功率 Power	0.25KW	0.55KW	0.75KW	1.1KW	1.5KW	2.2KW
转速 Speed	2800rpm	2800rpm	2800rpm	2800rpm	2800rpm	2800rpm
电压 Voltage	220/380	220/380	220/380	220/380	220/380	220/380
叶轮配置 Impeller configuration	不锈钢 stainless steel					

HWS 系列防爆多级泵 Explosion-proof Multistage pump



HWS stainless steel
Multistage
Three-phase explosion-proof pump
专利号: 201920511028.X
Patent No.201920511028.X

HWS不锈钢
多级
三相防爆泵



HWS stainless steel
Multistage
Single phase explosion-proof pump
专利号: 201920511028.X
Patent No.201920511028.X

HWS不锈钢
多级
单相防爆泵

HWS系列泵是我公司自行研制多级泵。采用多个叶轮组合而成, 轴封采用高低温机械密封, 密封安全可靠、结构简单, 维修方便快捷。该系列流量大、扬程高, 自吸速度快、能耗成本低等优势。可输送尿素、甲醇、二甲苯、汽油、柴油等易燃易爆介质。该泵并且与国内大型加油机厂商配套使用。

HWS series pumps are our own developed multi-stage pumps. it is made up of multiple impellers. the shaft seal is made of high and low temperature mechanical seals. the seal is safe and reliable, the structure is simple, and the maintenance is convenient and quick. the series has the advantages of large flow, high lift, fast self-priming speed and low energy consumption. it can transport flammable and explosive media such as urea, methanol, xylene, gasoline and diesel. the pumps are also supported for domestic large fuel dispenser manufacturers.

主要用途

该系列泵可输送温度不高于150℃, 低于-40℃。含有细小软颗粒或纤维质, 带腐蚀性或有卫生要求的液体, 广泛适用于食品、饮料、医药、污水处理、化工、电镀、漂染、精细化工等行业使用。可输送尿素、甲醇、二甲苯、汽油、柴油等易燃易爆介质。

使用条件

1. 以叶轮中心为准, 潜入液体深度不得超过10m。
2. 输送介质温度不高于150℃, 低于-40℃
3. 输送介质的PH值304 (4-10)

The main purpose

This series of pumps can resist temperatures up to 150 °C and below -40 °C. Contains fine soft particles or fiber, corrosive or hygienic liquid, widely used in food, beverage, pharmaceutical, sewage treatment, chemical, electroplating, bleaching, fine chemicals and other industries. It can transport flammable and explosive media such as urea, methanol, xylene, gasoline and diesel.

Conditions of Use

1. Based on the center of the impeller, the depth of the submerged liquid shall not exceed 10m.
2. The temperature of the conveying medium is not higher than 150 °C, lower than -40 °C
3. The pH of the transport medium is 304 (4-10).

技术参数 Performance Specification

型号 Model	HWS25-6-30	HWS40-8-30	HWS40-13-40
口径 Size	25mm	40mm	40mm
流量 Flow(m³/h)	6	8	13
扬程 Head	30	30	40
功率 Power	0.75KW	1.1KW	1.5KW
转速 Speed	2800rpm	2800rpm	2800rpm
电压 Voltage	220/380	220/380	220/380
叶轮配置 Impeller configuration	不锈钢 stainless steel		

LYB-2000 液化气叶片泵 LPG Vane Truck Pump

LWB-150 液化气涡轮泵 LPG Turbine Pump



LYB-2000

LYB-2000槽车叶片泵，用来传输液化气、氨水等，特别是用在高压差、超速转动、吸程低的恶劣工作环境下。

LYB-2000 Vane Truck Pumps, for LPG, NH₃ and other application, is specially designed to perform in such severe operating conditions as high differential pressure, pump over speeding, poor suction conditions.

特点 Advantage

- 革命性的凸轮设计，真正消除气蚀现象
- 新凸轮、叶片材料和重型轴承的使用，增加了泵的使用寿命
- 单一机械密封设计，维护更换简单便捷
- 大尺寸非金属推杆使泵可以高速旋转
- Innovative cam design virtually eliminates cavitation
- New materials utilized in cam and blades and heavy duty bearings extend pump life
- Single mechanical seal, very easy seal replacement and maintenance
- Large diameter non-metallic pins are suitable for higher pump speeds

应用范围 Application

液化气和氨水的批量传输	LPG and NH ₃ bulk transfer
加气站加气	Auto-fuel pumping
液化气装罐	LPG cylinders

技术参数 Technical Specification

型号 Model	LYB-2000
进口 Inlet	NPT2"
出口 Outlet	NPT2"
最大转速 Max.Speed	800RPM
电机功率 Motor	7.5Kw
温度范围 Temperature	-32℃~107℃
最大工作压力 Max.Working Pressure	28.6 bar
最大压差 Max.Differential Pressure	8.6 bar
内置溢流阀 Internal Relief valve	Yes

包装数据 Package Data

型号 Model	泵头 Pump only
包装尺寸 Dimension	48×35×35cm
净重 Net Weight	41kg
毛重 Gross Weight	50kg
包装 Package	1台/件木箱1pc/Wooden Case



LWB-150
整机complete
pump

LWB-150涡轮泵，在地上或地下气罐的高压差时使用。

LWB-150 LPG Turbine Pump, for high differential pressure application using, for underground and aboveground tank application.

特点 Advantage

- 经济高效的潜泵替代泵。
- 满足多种LPG加气需求。高压差时，无论地上液化气罐，还是地下液化气罐，可以为双枪加气机大流量加气。
- 连续高强度使用设计
- 使用起来简单方便
- A cost effective alternative to submersible designs
- Meeting multiple demands for LPG application, Whether a low or high flow rate with a high differential pressure, by inderground and aboveground tank application, LWB-150 pump is an idea pump for two dual hose LPG dispensers.
- Continuous duty design
- Using simple and cost effective

应用范围 Application

加气机加气	Autogas dispensing
装罐	Cylinder filling
液化气蒸汽回收	Vaporizer feed
批量输送	Bulk transfer

技术参数 Technical Specification

型号 Model	LWB-150
进口 Inlet	1.5"
出口 Outlet	1"
最大转速 Max.Speed	60Hz 3450 RPM or 50Hz 2880 RPM
电机功率 Motor	5.5Kw
温度范围 Temperature	-32℃~107℃
最大工作压力 Max.Working Pressure	27.6 bar(400PSI)
最大压差 Max.Differential Pressure	17.2 bar(250PSI)

包装数据 Package Data

型号 Model	泵头 Pump only	泵总成 Pump With Motor
包装尺寸 Dimension	37.5×30×40cm	95×45×60cm
净重 Net Weight	29kg	120kg
毛重 Gross Weight	35kg	140kg
包装 Package	1台/件木箱1pc/Wooden Case	

CYZ-A自吸式离心油泵

Self priming centrifugal oil pump

ZX卧式自吸泵

ZX horizontal type self-priming pump



100CYZ-A-40

CYZ-A自吸式离心油泵用来输送汽油，柴油，煤油等石油产品。介质温度在-20℃~+80℃，是一种优良的船用装卸油泵。也可以用来输送海水，淡水等。

CYZ-A pump is a centrifugal pump with function of self priming, for diesel oil, gasoline, kerosene and other light oily liquid transfer, with temperature at -20℃~+80℃. It's a good marine oil pump, transfers water and sea water as well.

口径 Size	25-300mm
流量 Flow	3.2-500 m ³ /h
扬程 Head	12-80m
吸程 Suction	6.5m
功率 Power	0.75-110Kw
转速 Speed	1450rpm 2900rpm
驱动 Driver	电机/柴油机 Electric motor/Diesel Engine
电压 Voltage	220V/380V

Yg管道离心泵

Pipeline Centrifugal Oil Pump

YG型立式管道泵是单级，单吸离心泵，输送汽油，柴油，煤油等轻质油品，介质温度为-20℃~+120℃。

YG Pipeline Pump is single stage, single suction centrifugal pump, transfers diesel oil, gasoline, kerosene and other light oily liquid, with temperature at 20℃~+120℃。Water is also applicable.

口径 Size	15-500mm
流量 Flow	1.5-1500 m ³ /h
扬程 Head	7-150m
功率 Power	0.37-160Kw
转速 Speed	2900rpm 1450rpm 980rpm
电压 Voltage	220V/380V

YG管道离心泵
Pipeline centrifugal pump

使用范围

Application

- 1、适用于城市环保、建筑、消防、化工、制药、染料、印染、酿造、电力、电镀、造纸、工矿冲洗、设备冷却等。
- 2、装上摇臂式喷头、又可将水冲到空中后，散成细小雨滴进行喷雾，是农场、苗圃、果园、茶园的良好机具。
- 3、适用于清水、海水及带有酸、碱度的化工介质液体和带有一般糊状的浆料（介质粘度≤100厘珀、含固量可达30%以下）。
- 4、可和任何型号、规格的压滤机配套使用，将浆料送给压滤机进行压滤的最理想配套泵种。

1. Applicable for urban environment, construction, fire control, chemical industry, pharmacy, dye, brewage, power electricity, plating, paper making, washing of industrial mines, cooling of equipment, etc.
2. It can be fitted with a rocking sprinkler to make water high into air and then spraying down with small drops, making it a good choice for farms, nurseries, gardens and tea gardens.
3. Suitable for clean water, sea water, chemical liquid carrying acid and alkali, and general mushy slurry (medium viscosity ≤ 100 centipoise, solid content below 30%).
4. It suitable for any styles of pressing filter machine. It is the best matched pump which transports slurry to pressing filter machine to filter.

口径 Size	25-300mm
流量 Flow	8-800 m ³ /h
扬程 Head	12-60m
吸程 Suction	5.5m
功率 Power	2.2-75Kw
转速 Speed	1450rpm 2900rpm
驱动 Driver	电机/柴油机 Electric motor/Diesel Engine
电压 Voltage	220V/380V



80ZX-A-20



不锈钢自吸泵
Sewage Pump
SS304



柴油机自吸泵
Diesel engine
Pump



380V 防爆电机 Ex-proof Motor

特点 Advantage

- 380V 单相防爆电机
- 效率高,使用寿命长
- 结构紧凑, 噪音低, 运行平稳
- 故障率低, 安装维修方便
- 380V single phase ,expsion proof
- high efficiency , long lifespan.
- Best performance, lower noise.
- Easy to install and repair, low failure rate.



320V 防爆电机
EX-Motor

功率(kw) Power	0.55W	0.75W	1.1KW	1.5KW	2.2KW	3KW
电压 Power	AC380V					
绝缘等级 Insulation class	F					
转速(rpm) Speed	1450/2900					
效率 Efficiency	94.2%					
防护等级 Protection class	IP55					
防爆标志 Ex-mark	ExdIIBT4Gb					
功率(kw) Power	4KW	5.5KW	7.5KW	11KW	15KW	18.5KW
电压 Power	AC380V					
绝缘等级 Insulation class	F					
转速(rpm) Speed	1450/2900					
效率 Efficiency	94.2%					
防护等级 Protection class	IP55					
防爆标志 Ex-mark	ExdIIBT4Gb					



220V 防爆电机 Ex-proof Motor

特点 Advantage

- 220V 单相防爆电机
- 效率高,使用寿命长
- 结构紧凑, 噪音低, 运行平稳
- 故障率低, 安装维修方便
- 220V single phase ,expsion proof
- high efficiency , long lifespan.
- Best performance, lower noise.
- Easy to install and repair, low failure rate.



220V 防爆电机
EX-Motor

功率(kw) Power	0.55KW	0.75KW	1.1KW	1.5KW	2.2KW	3KW	4KW
电压 Power	AC220V						
绝缘等级 Insulation class	F						
转速(rpm) Speed	1450/2900						
效率 Efficiency	94.2%						
防护等级 Protection class	IP55						
防爆标志 Ex-mark	ExdIIBT4Gb						

电动油桶泵 Electric barrel pump

电动油桶泵适用于从油桶或类似容器里抽吸各种低腐蚀性，无杂质，低粘度液体。配用不同材质和电机，可输送柴油，煤油，机油，汽油，液压油，动植物油，牛奶，饮料以及化工液体介质。

Electric Barrel Pump is applicable transferring clean, low-corrosive, low-viscosity liquid from barrels or similar tanks. With different material, different motor, it can pump diesel oil, gasoline, kerosene, engine oil, hydraulic oil, vegetable oil, milk, drink and chemicals.

特点 Advantage

- 体积小，重量轻，使用灵活，经久耐用。
- 适用于200L或220L油桶或类似容器。其他尺寸可定做。
- 应用于油库，油站，工厂，轮船等。
- Small size, light weight, durable, convenient operation and maintenance.
- Suitable for 200L or 220L barrels or similar tanks, other standard also available.
- For oil station, factories, ship etc.

型号 Model	进出口口径 Inlet/Outlet Dia(mm)	流量 Flow (L/min)	扬程 Head (m)	功率 Power (Kw)	转速 Speed (rpm)	泵体材质 Tube Material	叶轮/出口材质 Impeller/Port Material
JK-3B	55/20	50	2.5	0.12	2800	铝合金/Aluminum	塑料/PP
JK-3BS	55/20	50	2.5	0.12	2800	不锈钢/SS304	塑料/PP
YBYB-40	55/20	50	2.5	0.12 (防爆Ex)	2800	铝合金/Aluminum	塑料/PP
YBYB-40S	55/22	50	2.5	0.12 (防爆Ex)	2800	不锈钢/SS304	塑料/PP
SZQ-40	40/25	50	10	气动 Pneumatic	/	不锈钢/SS304	/
SB-3RPP-50	50/25	150	10	0.88 (防爆Ex)	12000	聚丙烯/RPP	塑料/PP

SB 系列电动抽液泵 Electric barrel pump

防爆系列 Ex-Proof Series

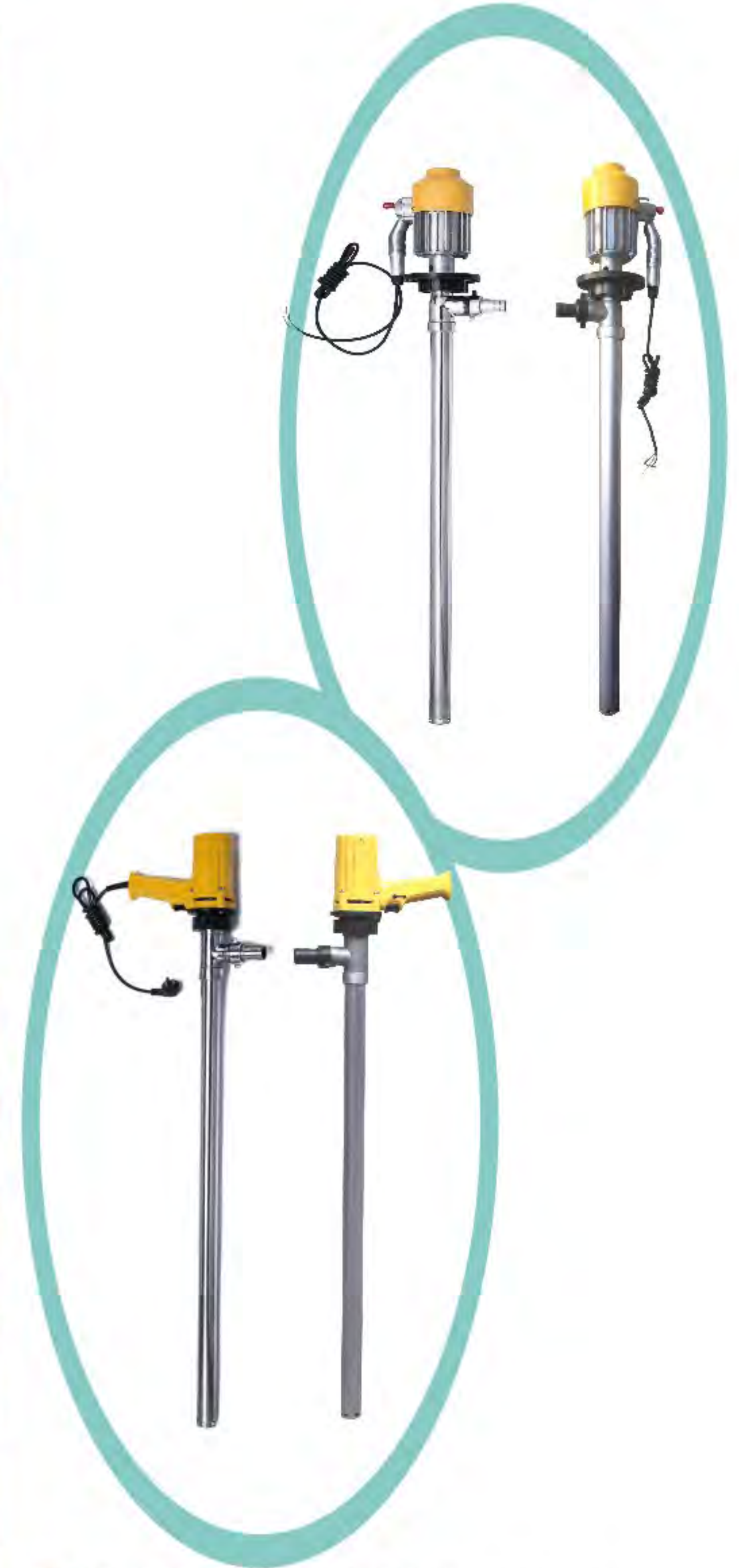
型号 Model	SB-3-1	SB-4
进出口 Dia(mm)	50/25	50/25
最大流量 Max Flow	150L/min	150L/min
电机 Motor	880W	880W
电压 Power	AC220V	50Hz
转速 Speed	12000 rpm	
泵体材料 Pump Material	不锈钢(SS304)	铝合金(Aluminum)
叶轮材料 Impeller Material	不锈钢(SS304)	塑料(PP)
净重 Net Weight	12kg/pc	6.3kg/pc
包装尺寸 Dimension	145 x 31 x 20cm 2pc/carton	

特点 Advantage

- 用于汽油，甲醇，酒精，机油
- 220V 单相防爆电机
- 氟橡胶油封
- 国家防爆检测认证
- For Gasoline, methanol, Alcohol, Engine oil
- 220V Single phase explosion proof motor
- viton seal
- National explosion proof certificate

型号 Model	SB-1	SB-2	SB-6	SB-7
进出口 Dia(mm)	45/25	50/25	40/25	40/25
最大流量 Max Flow	130L/min	130L/min	100L/min	100L/min
电机 Motor	880W	880W	550W	550W
电压 Power	AC220V		50Hz	
转速 Speed	10000 rpm		8000 rpm	
泵体材料 Pump Material	不锈钢(SS304)	铝合金(Aluminum)	不锈钢(SS304)	铝合金(Aluminum)
叶轮材料 Impeller Material	不锈钢(SS304)	塑料(PP)	不锈钢(SS304)	塑料(PP)
净重 Net Weight	8.3kg/pc	6.7kg/pc	6.6kg/pc	5.4kg/pc
包装尺寸 Dimension	130 x 33 x 21cm 2pc/carton		132 x 31 x 18cm 2pc/carton	

- 用于食用油，植物油，化学溶液，热油
- 高硬度齿轮
- 防腐泵体
- 耐高温
- 氟橡胶



- For cooking oil, plant oil, chemical liquid, Hot oil
- high hardness gear
- corrosion protection pump body
- high temperature resistance
- Viton seal

电子流量计 Digital flow meter

DYB 系列交流防爆电动油泵 AC Electric transfer pump



LLW-25
(1")



LLW-40
(1.5")



K24

技术参数 Technical Specification

型号 Model	K24
进出口螺纹连接 Inlet and Outlet	NPT1" BSP1"
本体材质 Body Material	聚苯硫醚 PPS
流量范围 Flow Range	5-50GPM(18.9-190LPM)
精度 Accuracy	±0.5%
重复性 Repeatability	±0.1%
压力等级 Pressure Class	10Bar

特点 Advantage

- 高精度、耐用和体积小巧的涡轮流量表；
- 2个累积量(1个可复位, 1个可累计)；
- 加仑和升可以随意转换；
- 内部组件容易更换, 维护方便轻巧、紧凑的设计易于安装；
- 锂电池供电, 大约9000小时
- High accuracy, Durable, Compact
- Two cumulants(resetting, and accumulating)
- Gallon or Liter Option
- Easy Maintenance
- Lithium Battery supplying 9000 Hours power

电子涡轮流量计 Electronic Turbine Flow Meter

型号 Model	DFM		
连接方式 Connection	螺纹或法兰 Thread or Flange		
可选口径 Size	3/4"	1"	1.5"
流量范围 Flow Range	3/4"	2-20GPM (7.6-75.7LPM)	
	1"	5-50GPM (18.9-190LPM)	
	1.5"	10-100GPM (38.0-380LPM)	
精度 Accuracy	3/4"	±1.0%	
	1"	±1.0%	
	1.5"	±0.5%	
重复性 Repeatability	±0.1%		
压力等级 Pressure	300PSI/21bar		
工作温度 Working Temp	°-40 F to +250 F (-40 C to +121 C)		

特点 Advantage

- 高精度、耐用和体积小巧, 提供2个累积量(1个可复位, 1个可累计)；
- 计量单位加仑和升可以随意转换；
- PPC壳体、还可用于化工、医药等腐蚀性介质计量场合。
- High accuracy, Durable, Compact, Two cumulants(resetting, and accumulating)
- Gallon or Liter Option
- PPC body, also for chemical industry, medicine and other corrosive medium measurement

- 用于柴油, 煤油, 溶剂油。
- 内置过滤网、溢流阀。
- 1"4米油管, 1"自动油枪可选。
- 连接方面, 易于携带。
- For diesel, kerosene, mineral spirits, stoddard, solvent.
- Built-in strainer, bypass valve.
- 1"diameter, 12' hose with static ground wire and 1"automatic nozzle for option.
- Easy to connect, very portable.

可选配件 Options

- FM-120流量计
- 手动油枪
- 4m 油管
- FM-120 meter in liters
- Manual nozzle
- 4m Hosse

型号 Model	DYB60	DYB80	DYB150
进口 Inlet	1"	1.2"	1.2"
出口 Outlet	1"	1.2"	1.2"
流量 Flow	20-80L/min	120-150L/min	120-150L/min
吸程 Suction 扬程 Head	4m/15m	5m/15m	5m/15m
电机 Motor	550W 220V 50hz	0.75KW 220V 50Hz	0.75KW 220V 50Hz
泵体材料 Pump Material	铸铁 Casting Iron	铸铁 Casting Iron	铸铁 Casting Iron
可选配置 For Option	4m油管, 油表, 油枪 4mHose, Flow Meter, Fuel Nozzle		



220V 单泵
220V pump

DYB80



220V 单泵
220V pump

DYB80静音



220V 计量总成
220V Unit

220V DYB80



220V 单泵
220V pump

DYB150